

Install and Register the Client

Prerequisites

A. Operating System:

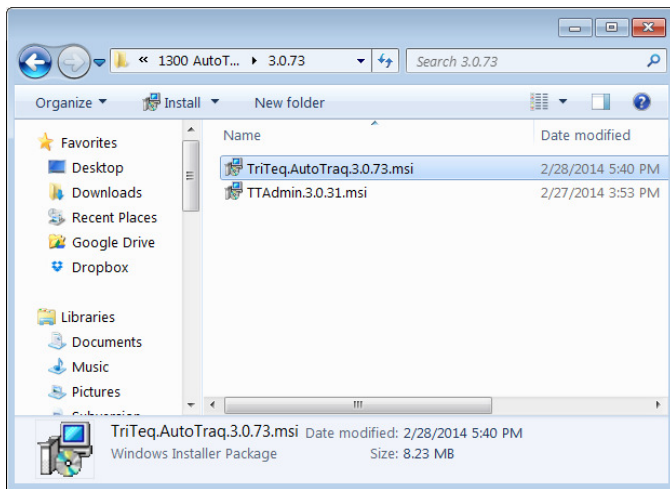
- Windows XP, Windows 7 or Windows 7 Professional or Enterprise Editions
- .Net Framework 4.0 Extended Client

B. USB or Serial Cradle

C. Connection to TriTeq Registration Server (optional)

Although this is optional, connection to our registration server is highly recommended as it will speed the registration process and eliminate errors. The "Network Tester" software can be downloaded from the TriTeq website and the firewall can be configured to allow access. After registration is complete, the connection can be severed, and the firewall can be restored to the prior settings.

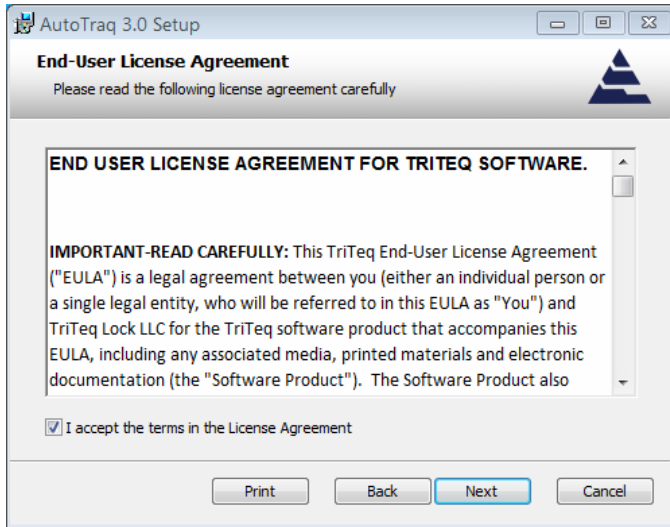
Installation



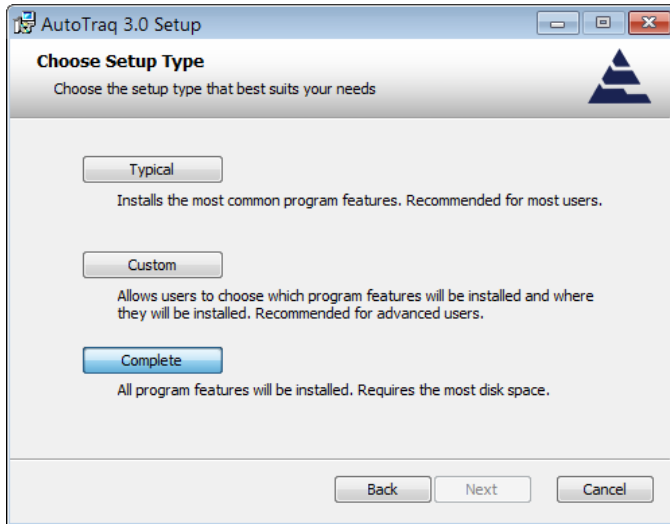
Run the file named ***TritEq.AutoTraq.3.x.xx.msi*** and choose option **Install**.



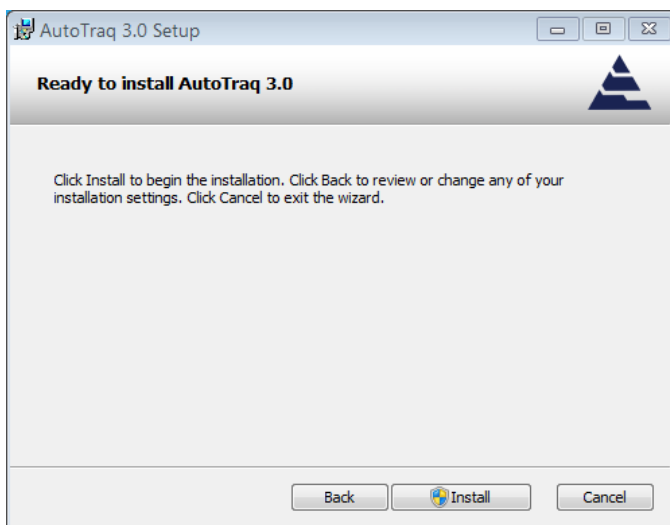
At the software installation welcome screen, click ***Next*** to continue installation process.



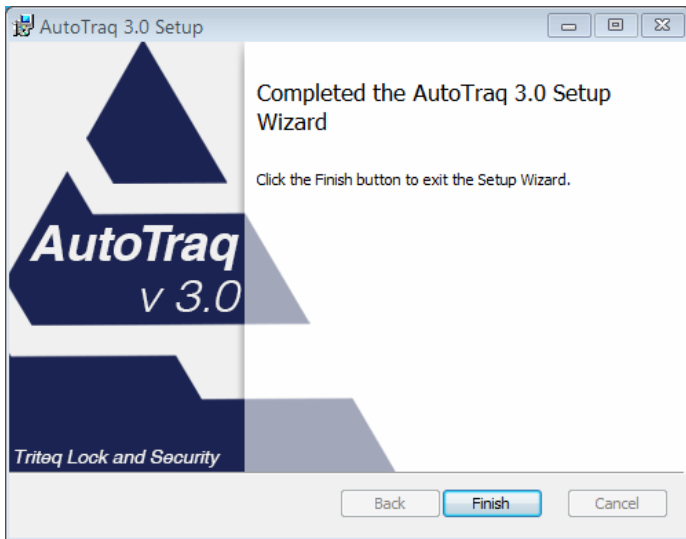
Read the "License Agreement". If you accept the terms of the agreement, click **Next** to continue.



Select **Complete** to perform a full installation.



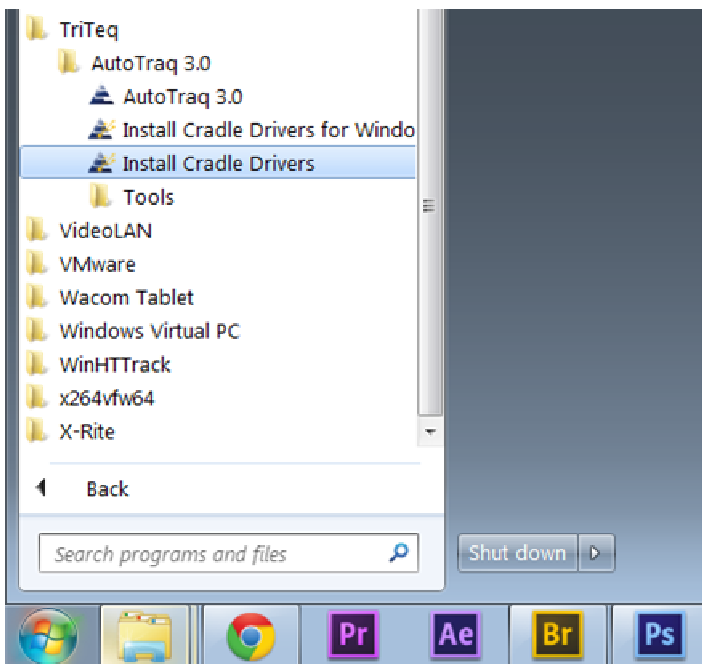
Click **Install** button to continue or **Cancel** to exit the installation.



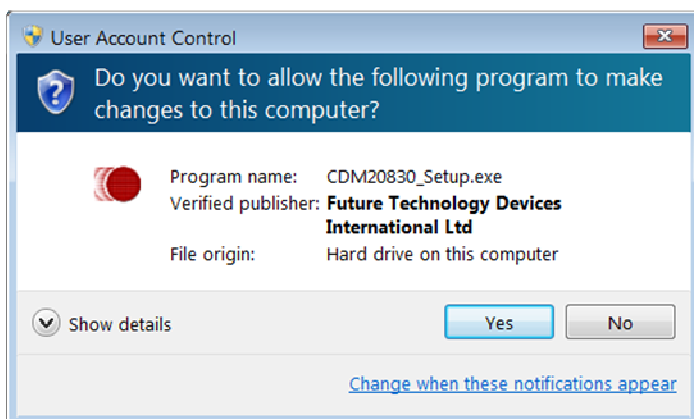
At the end of the software installation screen, click **Finish** and the **AutoTraQ** software is installed on your computer.

Install Cradle Drivers

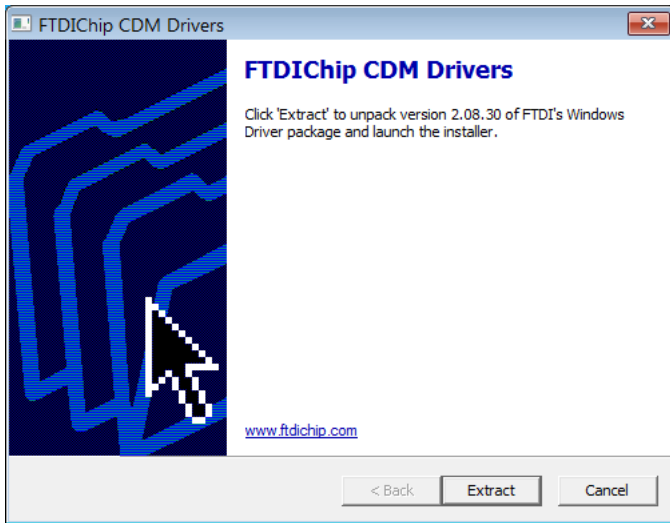
AutoTraQ 3.0 is using a USB cradle to communicate with the fob. The following steps are required to install the drivers for the cradle:



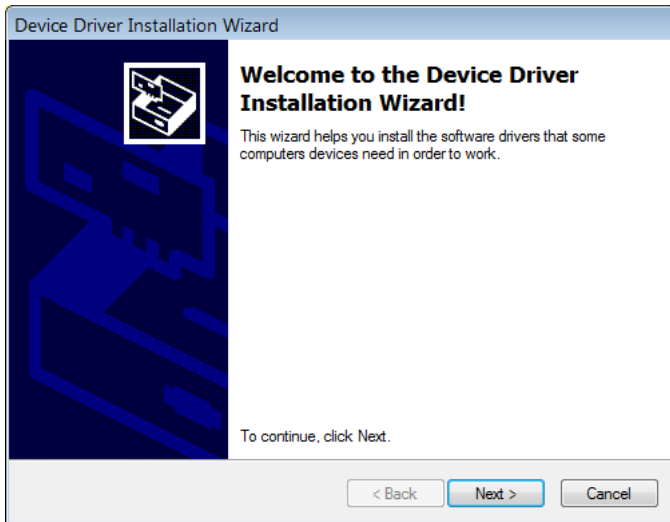
To install the cradle drivers click on the **Install Cradle Drivers** program from the **Triteq > AutoTraQ 3.0** installation folder.



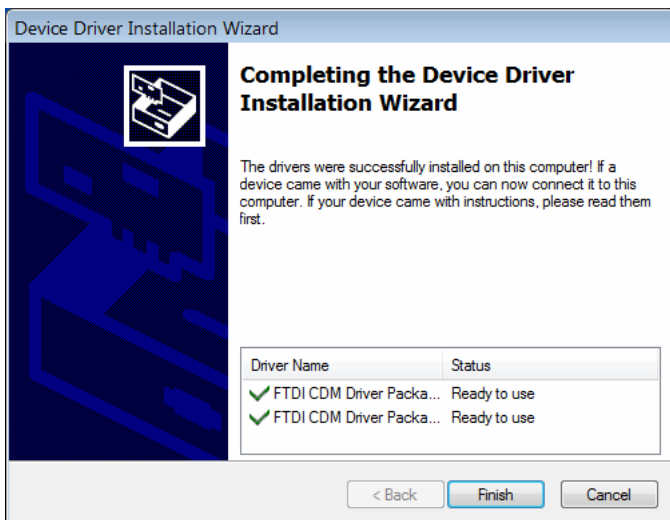
To begin the cradle driver installation click **Yes** to continue.



Click **Extract** to launch the installer.

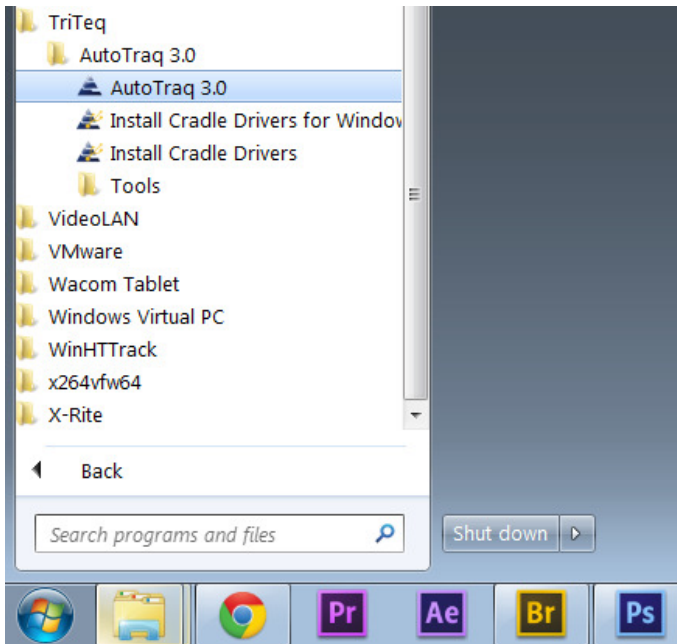


Continue the installation by clicking **Next**.



The installation is now complete.
Click **Finish**.

Connect to the Database



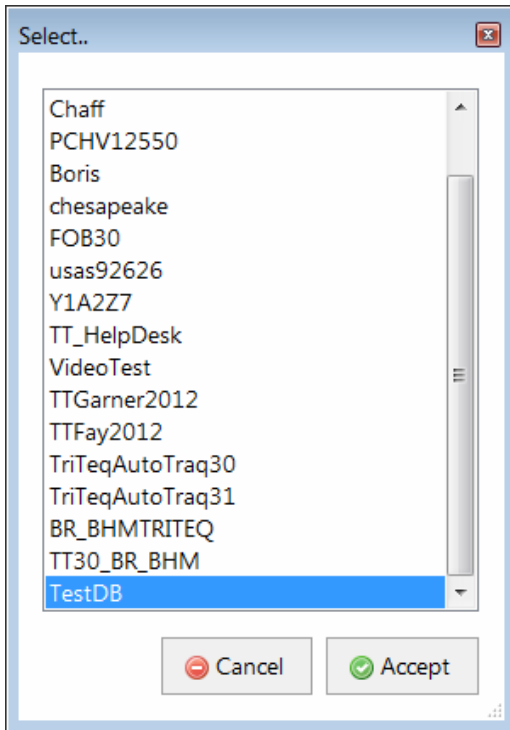
To open AutoTraq, locate the **TriTeq > AutoTraq 3.0** program folder and click on AutoTraq 3.0.

A screenshot of the 'Configure Database' dialog box. The title bar says 'Configure Database'. The main text says 'Welcome to AutoTraq' and 'It appears that the software has not yet been configured or the configuration has changed since last time .'. Below this, it says 'Please Configure the Remote Database:'. There are two radio buttons for 'Database Type', with 'MS SQL Server' selected. Below that, there are two text input fields: 'SQL Server' and 'Database:'. To the right of the 'Database:' field is a 'Browse' button. Below these fields, it says 'Please Select An Instance:' and 'Current Instance:' followed by a dropdown menu. At the bottom right, there are two buttons: 'Exit' and 'Accept'.

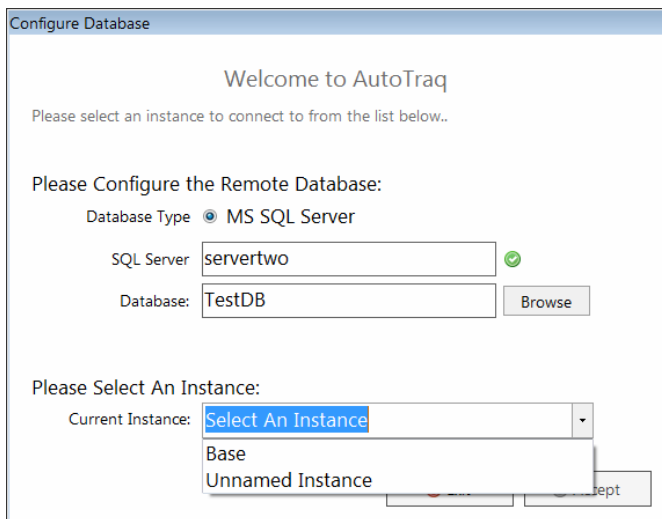
Enter your SQL server address.

A screenshot of the 'Configure Database' dialog box, showing the state after clicking the 'Browse' button. The title bar says 'Configure Database'. The main text says 'Welcome to AutoTraq' and 'The selected database file is not the correct version..'. Below this, it says 'Please Configure the Remote Database:'. There are two radio buttons for 'Database Type', with 'MS SQL Server' selected. Below that, there are two text input fields: 'SQL Server' and 'Database:'. The 'SQL Server' field now contains the text 'servertwo' and has a green checkmark icon to its right. To the right of the 'Database:' field is a 'Browse' button. Below these fields, it says 'Please Select An Instance:' and 'Current Instance:' followed by a dropdown menu. At the bottom right, there are two buttons: 'Exit' and 'Accept'.

Click the **Browse** button to find your database.



Select your database and click **Accept**.



Select your Instance and click **Accept**.

Register the Software

AutoTraq Software Registration

Tritaq Autotraq Software Registration

It looks like the AutoTraq software was never registered on this computer..
Please enter your cradle label and the name of this station (the computer on which you will be running the)

Cradle Label:

Station Name:

☐ Previously my software was registered to the following cradle:

Previous Cradle Label:

(Optional: leave empty if this is a new installation)

IMPORTANT -- CUSTOMERS REPLACING YOUR CRADLE, PLEASE READ THIS!
If you are registering the software because you have received a new cradle to replace an old or defective model, please make sure to indicate your previous cradle label above.
If you don't provide the old cradle label, you will not be able to register the software over the internet.

To start the registration process, enter the cradle label and station name. If your prior software was registered to a different cradle, specify the label from the old cradle. Click **Next** to proceed.

AutoTraq Software Registration

Tritaq Autotraq Software Registration

Please Select your Cradle [Refresh](#)

Please make sure that the cradle you will be using with the software is connected to the computer.
If the cradle is not already connected, please connect it now and click Refresh to see a list of all the available cradles connected to this computer.

Select the connection port of the cradle.

AutoTraq Software Registration

TriTaq Autotraq Software Registration

Software Label 834DLMK4

Customer Information

Title
First Name
Last Name
Address
City
State Zip
Country
Phone
Fax
Email

Customer Type

Customer Type
Corp. Hq. Zip
Corp. Hq. Name

Your information was retrieved from the license server. Please make sure the information is up to date.
If you have a new software label please replace the one above before continuing!

Cradle Label: 72V5GV
Station 2600K-PC

Clear Fields

Cancel Back Next

If this is an upgrade your information should populate the screen with the information you supplied at the last time you registered. Make any edits necessary and click on **Next**.

If you are a new user, enter the required information and click on **Next**.

AutoTraq Software Registration

TriTaq Autotraq Software Registration

AutoTraq was successfully registered!

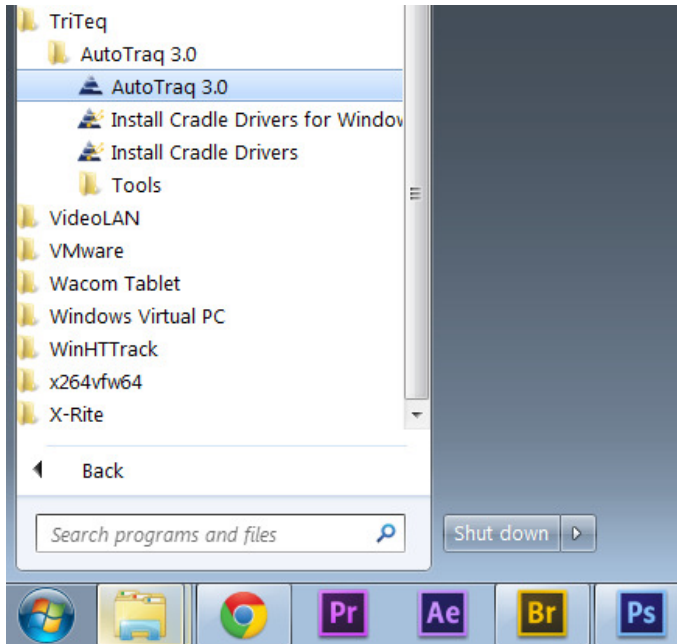
Please restart the software and log in to start using your copy of AutoTraq.

Cancel Back Finish

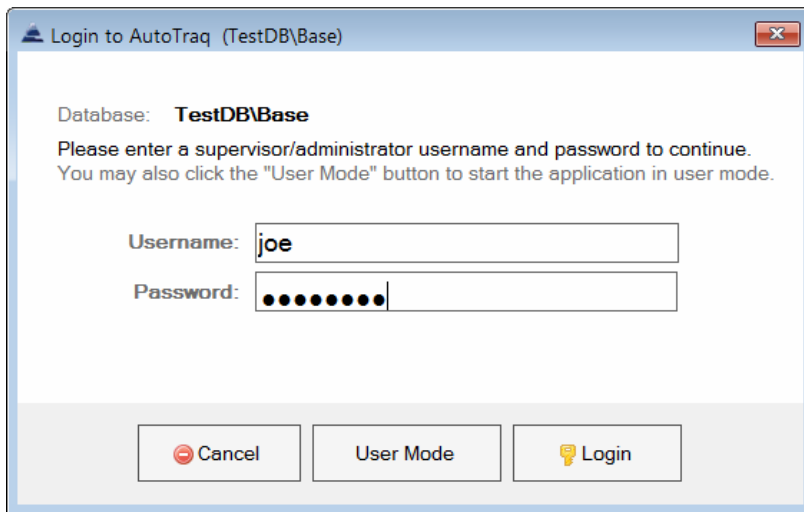
If the registration is completed successfully you will receive a message on your screen and an email will automatically be sent to the email address you provided.

To exit the registration window, click **Finish**.

Verify Login and Key Refresh

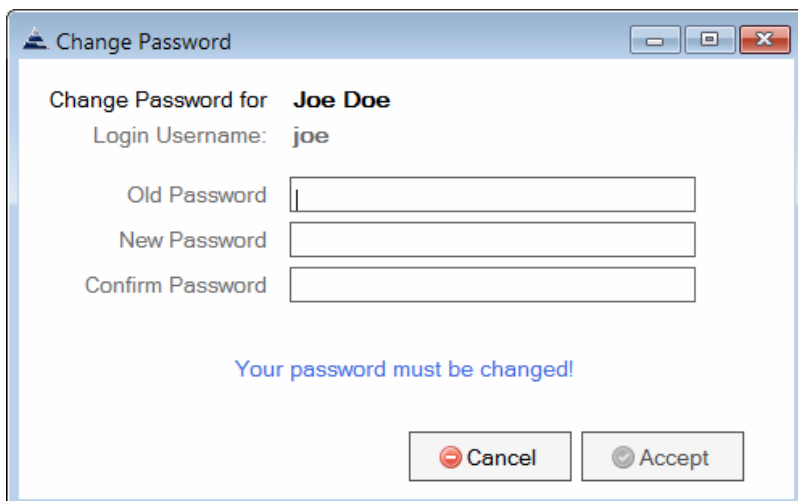


To run the software, open the **TritEq** > **AutoTraq 3.0** folder and click on AutoTraq 3.0.



To use the software as an authorized user, enter your username and password then click **Login**.

The system also allows you to use the software without logging in by clicking on **User Mode** button.



The first time an authorized user will logs in, the software will require a change of password.

After entering your old password you must choose a new password and click **Accept**.

TriTeq AutoTraq 3.0.74.0

File Keys and Users Customers and Locks Help

Connected To: Base

Keys Starting With: **AA, AB, AD**

Assigned User: Dan Tdl

Key-Fob ID: **AAA5001 - 225**

Key Type: AutoTraq Route v. 28

Constraints: Vendors Per Day Allowed 30

Expiration: Mar 05, 2014 - 1 day(s) left

Days Valid: Mon Tue Wed Thu Fri

Fob Enabled: 6AM - 6PM

Audit Trails: 0

The fob was successfully refreshed!

Clear Form Audit Trails Exit

12:31:53 PM Joe Doe IDLE

To refresh an AutoTraq fob, place the fob in the cradle and press on the button.

The screen will refresh and the fobs information will be available.