



## LOCK SYSTEM USERS MANUAL

**PEPSI**  
H V V

High Visibility Vendor

Revision J.  
October 2004



---

701 GULLO AVENUE ---ELK GROVE, IL---60007  
PHONE 847-640-7002---FAX 847-640-7008  
[email—sales@triteqlock.com](mailto:sales@triteqlock.com)  
[www.Triteqlock.com](http://www.Triteqlock.com)

This manual includes information for:  
Model 707/717 v. 7.X.X Software, Model 747 v 7.X.X Network Software

# Table of Contents

Cover .....	a
Table of Contents .....	b
	Section-Page
User Guide Nomenclature .....	1-1
<b>Section 1 Introduction .....</b>	<b>1-1</b>
Purpose .....	1-1
Overview .....	1-1
Lock .....	1-1
Mechanical .....	1-1
The Lock Box .....	1-1
The Receptacle .....	1-1
Electronics .....	1-2
The Lock Box .....	1-2
The Key Fob .....	1-2
Key Fob type feature list .....	1-2
Key Fob type details .....	1-3
Key code chart .....	1-4
Computer .....	1-5
Key Deployment .....	1-5
<b>Section 2 Operation .....</b>	<b>2-1</b>
Unlocking the door .....	2-1
Locking the door .....	2-1
Setting up Vendors.....	2-2
Teaching the Lock, Zone and Route Key Codes .....	2-3
Testing the Lock .....	2-4
Key Deployment Strategies	
Key Code Example A.....	2-5
Key Code Example B.....	2-5
Key Code Example C.....	2-5
<b>Section 3 Setting up and Operating Auto-Traq .....</b>	<b>3-1</b>
Overview .....	3-1
Installation.....	3-1
Registration .....	3-3
Registration.....	3-4
Registration.....	3-5
Registration.....	3-6
Please refer to Help File on software for usage information.....	3-7
<b>Section 4 Service Tools .....</b>	<b>4-1</b>
Key Fob Light Diagnosis .....	4-1
Lock reader .....	4-2
Troubleshooting guide .....	4-4
<b>Section 5 Maintenance procedures .....</b>	<b>5-1</b>
Inner door gasket tension .....	5-1
Key FOB battery replacement .....	5-1
Battery backup system .....	5-1
Emergency opening process .....	5-1
Lock removal .....	5-1
Receptacle replacement .....	5-2

<b><u>Section 6</u> Specifications .....</b>	<b>6-1</b>
<b><u>Section 7</u> Trademark Acknowledgements .....</b>	<b>7-1</b>

### User Guide Nomenclature

The following notions are used throughout this manual please be aware of their importance.

**!!WARNING!! This is used when there is a possibility of bodily injury**

**NOTE: This is used to call special attention to an action that if not followed may result in improper lock operation, including causing the vendor to not open.**

**Special Note: This is used to call attention to an issue that applies to a specification or information that applies to different variations of the lock. This may be used to identify older versions of Keys, Locks, etc and how they interact with current production**

## **Section 1 INTRODUCTION**

### **Purpose:**

The purpose of this instruction manual is to describe the electronic Lock and Key Fob function.

### **Overview**

The Pepsi High Visibility Vendor is equipped with an electronic locking system. This system has many features and benefits that when used properly can reduce field losses as well as improve productivity.

The lock and its software provide many tools to the Pepsi Bottler and third party operators. In addition to this book, PCNA and the Pepsi Bottling Groups (PBG) have published an HVV Implementation Guide, which all bottlers should have received.

### **The Lock**

#### **Mechanical**

The lock itself consists of two main components; the Vendor Lock Box that is mounted into the door and the receptacle that mounts into the vendor cabinet.

#### **Vendor Lock Box**

The Vendor Lock Box is mounted into the door and houses the electronics package and a receiver "pipe". The Vendor Lock Box is serviced as two parts, the lock and the pipe; no other parts are available for field repairs.

A motor drive in the Vendor Lock Box is used to open as well as close the door. It uses power supplied by the machine controller. There is a battery pack available as an alternate way to provide power to the lock only in the event of a power failure. The motor drive is coupled to a steel bayonet shaft that extends from the Vendor Lock Box into the cabinet and attaches itself to the receptacle when the door is pushed closed.

When the door is closed the lock compresses the gasket with several hundred pounds of force. This force insures a tight seal. This seal reduces vandalism, keeps the product colder, reduces electricity usage for your customer and, reduces compressor maintenance.

#### **The receptacle**

The receptacle is mounted where the former nut bracket receiver unit was. The receptacle has a switch that when activated by the bayonet tip causes the lock to activate. This unit has two serviceable parts; the switch and the entire assembly.

## Electronics

The electronics package consists of three main parts:

- the electronics that are housed in the Vendor Lock Box
- the Key Fob
- the computer program with the Key Fob cradle

### The Vendor Lock Box

The Vendor Lock Box electronics uses an IRDA signal from the Key Fob to activate the opening cycle. This signal is a rolling encrypted, three-way communication link. The signal is sent from the Key Fob into the Vendor Lock Box after pointing the Key Fob towards the receiver "pipe" at a specific place and distance on the vendor and then pressing the Key Fob button. ( See FIG A, section 2-1) The "teaching or programming" of the Vendor Lock Box to a new Key code is done by pressing the "programming" or "learn" button that is located in the Vendor Lock Box. The door must be opened before the Vendor Lock Box will allow code changes. The lock code can be changed as often as needed and has no limits to the number of LIKE Key codes that can operate the vendor.

The closing cycle begins by a signal via wires that come from a switch located in the receptacle. When the vendor door is pushed closed far enough for the bayonet to activate this switch the electronics turns the motor ON and the Vendor Lock Box mechanism pulls the door in.

### The Key Fob

#### **Key Fob types feature list**

There are three types of Keys available for the electronic lock:

- Economy (E-Key),
- Standard
- Auto-Traq.

<b>FEATURES</b>	<b>Economy Key</b>	<b>Standard Key</b>	<b>AutoTraq Key</b>
Both Route & Zone Keys Available	Route Only	X	X
Four Step Procedure To Learn Key To Lock	X	X	X
Medium Security Rolling Codes	X		
High Security 32 Bit Encryption Codes		X	X
Dual Direction IRDA Non Contact Transmission		X	X
16 Million Exclusive Key Codes Available	X	X	X
Keycodes Reprogrammable By TriTeq		X	X
Unlimited Number Of Vendors Per Key	X	X	X
Like Keys Available Per Keycode	X	X	X
Tracks Vendor Access Attempts			X
Access Limits To Operate By Time, Number Of Day(s), And Number Of Accesses			X

In reviewing the feature list please note that each type of Key Fob offers a variety of different functions that can be used in various types of markets for the Bottler. Some examples may be; Auto-Traq Keys can be used for full serve and Economy Keys can be used for third party operators and so on. TriTeq can provide several hundred LIKE Keys of each code if required. Each vendor can be programmed to use one Keyed alike code or each vendor can operate on its own individual code (Keyed different). This concept mimics the widely used mechanical Key system. The differences being that when you need to change a Key code in the mechanical system you replace the core and its key. With the TriTeq electronic lock, you'll never need to replace the lock "core". Instead, you reprogram or "teach" a new Key code into the lock. This reprogramming erases the previous code. This procedure can be repeated as often as required. The Keys are ONLY available from TriTeq. Pepsi has not approved any other Key Fob distribution at this time.

#### Key Fob Type Details

**The Auto-Traq Key Fob** is TriTeq's most advanced Keying system.

**Note:** Auto-Traq requires additional software at an added cost.

Programmed properly this Key Fob offers the highest level of security available. This Key Fob can be set to operate for a specific time of day, specific days of the week, number of total accesses, accesses per day, or any combination of the above. These parameters are adjustable and are installed into the Key Fob via the computer link with a cradle device. The Key Fob will effectively turn itself OFF when any one of the parameters is reached. This Key Fob also records which vendor it has opened or attempted to open. The vendor is also recording which Key Fob either opened or made an attempt to open it. As the Key Fob visits vendors it collects the data inside its memory then is carried back to the Bottler for downloading (refresh). When the Key Fob is refreshed (downloaded) the events are transferred into the computer database. Like events are sorted out and discarded and all new events are displayed along with the previous events already stored in the database. The Key Fob also has an internal clock that gets updated each time the Key Fob is refreshed. Setting the Key Fob parameters enhances vendor security so that if a Key Fob is lost or stolen it expires. When a Key Fob is expired it can not open any vendor. **The Auto-Traq Key Fob is identified by its gold Key ring.**

**The Standard Key Fob** has a very high level of security equal to the Auto-Traq Key Fob but without the ability to turn the Key Fob off and on and bring back the audit data. If a Key Fob is lost the vendors that are programmed to this code will need to be programmed to a new code in the field. **This Key Fob is identified by its silver Key ring.**

**The E-Key ( economy ) Key Fob** is a lowest cost Key Fob. It does not have the three-way communication system possessed by the Standard and Auto-Traq Key types. This Key Fob is used when high security is not the primary issue. Its purpose is to be used for up and down the street and third party operators. It has no parameter limits. **This Key Fob is identified by its black Key ring.**

#### Route and Zone Key Fobs

The Auto-Traq and Standard Keys are available as Route or Zone Keys. The Zone Key is designed for use by Service personnel or Managers. The Route Keys are designed to be used by Sales or Route delivery personnel.

**The Route Keys are Colored Black and the Zone Keys are Blue.** Each vendor can be programmed to accept one Route Key code and one Zone Key code. The vendor will not accept two different Route Keys codes or two different Zone Key codes. The lock will function using an E-Key as the route Key and either an Auto-Traq Zone Key or a Standard Zone Key. See Section 1 Page 5

**Note: Auto-Traq will not collect time data from E-Key or Standard Key entries into the Vendor Lock.**



ROUTE



ZONE

## Key Code Chart

The Key code that has been engraved on the case contains important information. The information contained in the Key code is detailed in the following chart.

The purpose of the CITY CODE is to identify which branch or city the Key code was sold to. The rule being applied to the Pepsi system is when a branch in a market unit does not share equipment with another market unit a new city code is used. Using the example below, Tulsa North does not share equipment with Tulsa South. Therefore each branch would have a separate CITY CODE. If your equipment moves throughout the branch then one CITY CODE would be used. The CITY CODE is also used to identify the Key Fob if it is lost.



**NOTE: An ACS0001 will not open and AFS0001. Despite the common S0001 of both Keys the prefix AC and AF is part of the Key code and make the code unique.**

The KEY TYPE-----ZONE/ROUTE-----and NUMERIC SEQUENCE are self-explanatory.

CITY CODE	KEY TYPE	ZONE ROUTE	NUMERIC SEQUENCE
<u>AC</u>	<u>S</u>	<u>5</u>	<u>004</u>
↙	↙	↑	↑
TULSA N = <b>AC</b> TULSA S = <b>AF</b> PHOENIX = <b>DF</b> GARNER = <b>DA</b> TAMPA = <b>CF</b> AND SO ON...	<b>S</b> = STANDARD <b>A</b> = AUTO-TRAQ <b>E</b> = ECONOMY	0 } ZONE KEY 1 } blue 2 } 3 } 4 } 5 } 6 } ROUTE KEY 7 } black 8 } 9 }	4 th KEY ASSIGNED

### Special Note: D00, V00 Keys and P1 Keys

Early prototype vendors HT-1 and HT-2 were preprogrammed with a D00 Key (Dixie-Narco) or a V00 Key (Vendo) from the manufactures. Pepsi production units are pre-programmed to P1 Keys. The P1 Key is considered as a Route Key in the lock electronics. To open the vendor, it is necessary to purchase a P1 Key from TriTeq. This replaces the D00 and V00 systems used previously. The P1 Key and D00 Key are interchangeable (internally they are the same code). V00 has been replaced by the P1 and will no longer be available.



Computer

The third part of the electronics package is the software and its cradle. The Auto-Traq Interface Software is required when you use the Auto-Traq Keying system. **If you only use E-Keys and Standard Keys no software is required.** The Auto-Traq cradle is a serial device similar to a Palm Pilot cradle. It refreshes the Key Fob through its Infrared port. This data is fed into the computer through a full 9 wire serial cable. The data is then uploaded into a Microsoft Access database. The database compares data from the all the Keys and discards the duplicate data and displays the results. The software, cradle and cradle power supply is only available from TriTeq.

Key Deployment by application

**CHOOSE ONE FROM EACH COLUMN BELOW**

ROUTE KEY

ZONE KEY

AUTO TRAQ



GOLD RING



GOLD RING

STANDARD



SILVER RING



SILVER RING

ECONOMY



BLACK RING

1

2

The keys can be mixed and matched any way. Any key from first column may be used with any key from second column.

**APPLICATION EXAMPLES**

FULL SERVE

1

ROUTE KEY

GOLD RING

2

ZONE KEY

GOLD RING



THIRD PARTY

1

ROUTE KEY

BLACK RING

2

ZONE KEY

SILVER RING



SINGLE CHANNEL

1

ROUTE KEY

BLACK RING

2

ZONE KEY

GOLD RING

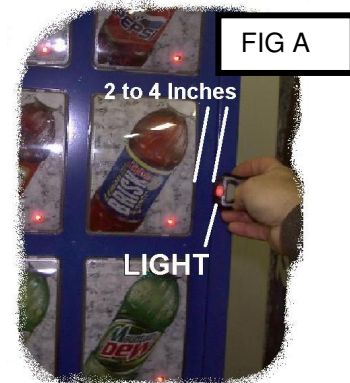




## Section 2 Operation HVV 12- Button Vendor

### Unlocking the door.     FIG A

After the vendor has been connected to the proper power, the electronic locking system is powered up. The locks as supplied to the manufacturer are preprogrammed with the factory code P1. The Key Fob as detailed earlier is used to open the door. Point the P1 Key Fob at the edge of the button as shown on the right. Hold the Key Fob approximately 2 to 4 inches from the front of the door. Press the button on the Key Fob. Observe the light on the top of the Key Fob. The light flashes rapidly while the Key Fob is 'looking' for the lock. Once the Key Fob has established proper communication with the lock, the light will become very bright and stay on for approximately one second.



**NOTE:** The HVV Narrow Vendor 6-Button sensor may be located in different position.

The lock will begin its opening cycle by turning on the lock motor and releasing the inner door seal. During this cycle the display on the front of the door display will indicate "Door Opening". **FIG B** After six to eight seconds the motor will stop and the display will read "Door Unlocked". Pull the door open to access the vendor.



FIG B

**NOTE:** Before installing the machine on location, You should reprogram the lock with a Key code per your own Route / Driver and Service Tech requirements. For security reasons, DO NOT leave Key Code P1 in the Vendor Lock.

### Locking the Door.

Lock the door by pushing it closed until you hear the lock motor start. Continue holding the door for 2 to 3 seconds or until the door begins to pull in. The front display will read "Door Closing". The lock is designed to stop pulling in after it has compressed the inner door seal. The display will read "Door Locked". **FIG C** The closing cycle is automatic you do not need the Key Fob to lock the door.



FIG C

If by chance, you release the door before the lock has had a chance to engage properly it will return to the unlocked position. The lock will sense you did not hold the door closed for a long enough period of time. Pull the door open again and attempt to close it again.

Always check the door after locking by giving it a tug on its side.

**!! WARNING !!** Avoid placing any objects or body parts near any surfaces of the door closing area. Insure no other persons are near the vendor while it is being closed. Serious injury can result. Always keep the Key Fob within reach.

**NOTE:** Do not lock the Key Fob inside the vendor.

**NOTE:** For the following instruction it is assumed that the appropriate types of Keys have been ordered and are available.

## Setting up Vendors

Before keys are setup in the Autotraq Database, a written record should be kept of the vendors during initial setup. Vendor information intended for use should include lock ID, asset number, Customer information, and location information. This will help in entering these assets and avoid confusion when and/or if printed reports are run. For this, a lock reader tool, a pad of paper, pen, and an Autotraq key are required. Consider using one Autotraq zone key as a master since it should be assigned to every vendor.

On the pad of paper, set up a table to record Lock serial number, asset number, customer information, and physical location. Later, the Autotraq program will identify the machine via the Lock serial number or Lock ID. Here is an example:

<b>Lock Serial #</b>	<b>Asset Number</b>	<b>Customer Information</b>	<b>Location</b>
1204723 1207455	Machine 7 Machine 5	Triteq Towing Triteq Drugstore	233 s. Wacker Drive, Chicago 2301 Ravine Way, Glenview

Record the Lock Serial Number displayed from the lock reader. This number is auto-numbered in the software and thus required.	Record the Asset # of the NEW vendor. This number is required in the software.	Record Customer Name for this NEW Vendor	Record any other information you want for the NEW vendor
---	--	--	--

First things first. Visit each machine and use the lock reader tool for the lock serial number. This is how Autotraq will identify each lock and subsequently each machine. Look for the asset number on the outside of the vendor. Your records may require customer and location information.

Continue with the Lock programming sequence. Be sure to keep the table information and vendor setup in the same sequence since it will be entered into the database in the same order as they were entered.

## Teaching the Lock the Route and [Zone](#) Key Codes.

**Note:** If Auto-Traq Keys are being used they will need to be set-up with operational parameters during this process.

The vendor door must be in the open position and the lock bayonet flat areas must be vertical (unlocked) before the lock can “learn” a new Key code. As explained earlier, TriTeq Key Fobs are

engraved with the Key code at the factory. It is safe to think of these codes similar to those of a mechanical Key.



KEYCODE

Each route may have a unique Key code for the salesperson or one Key code can be used for all routes. Every Key Fob with the same code number will open every vendor that is programmed to that code number. You do NOT need to program each like Key code into the same vendor. I.E. once a series of vendors have been programmed to the ACS5004 code, every Key Fob with the ACS5004 code will operate those vendors. A single Key Fob code can be programmed into any quantity of vendors with no restrictions.

**NOTE:** Each lock will accept two Keys, ONE zone (blue) and ONE route (black).

### Four Step set up for the [Zone](#) or Route Keys FIG D:

1. Locate the 'learn' (programming) button inside the door on the back of the Vendor Lock Box. Using a pencil or similar tool, press and hold in the button until the yellow LED light turns "ON". Do not apply excessive force on the button. It is similar to the program button on the controller.

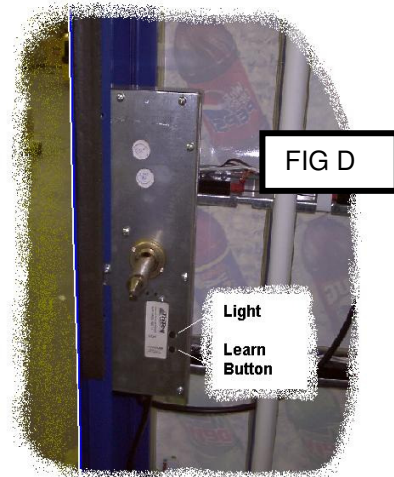
**NOTE:** Do not release the button until the light is "ON".

2. Release the button, while the light is still "ON", hold the NEW Key code in front of the door as if you were opening the door and press the Key Fob button.

3. Observe the LED light on the lock, when it "sees" the Key Fob it will begin flashing. The Key Fob light will also stay ON very bright. Both are indicating that the lock has accepted the NEW Key code.

4. Programming (or learning) is completed when the light stops flashing. It is not necessary to hold the Key Fob in front of the door during the entire time the LED light on the Vendor Lock Box is flashing.

The [Zone](#) and Route Keys are “learned” (programmed) into the lock the same way. Repeat the above process for either the Route or [Zone](#) Keys as required



**NOTE:** You need to test the lock. Do not close the door YET!!

## Testing the Lock Code

Before closing the door you will need to test the lock to insure that the new Key code was properly “learned” (programmed) into the vendor Lock Box.

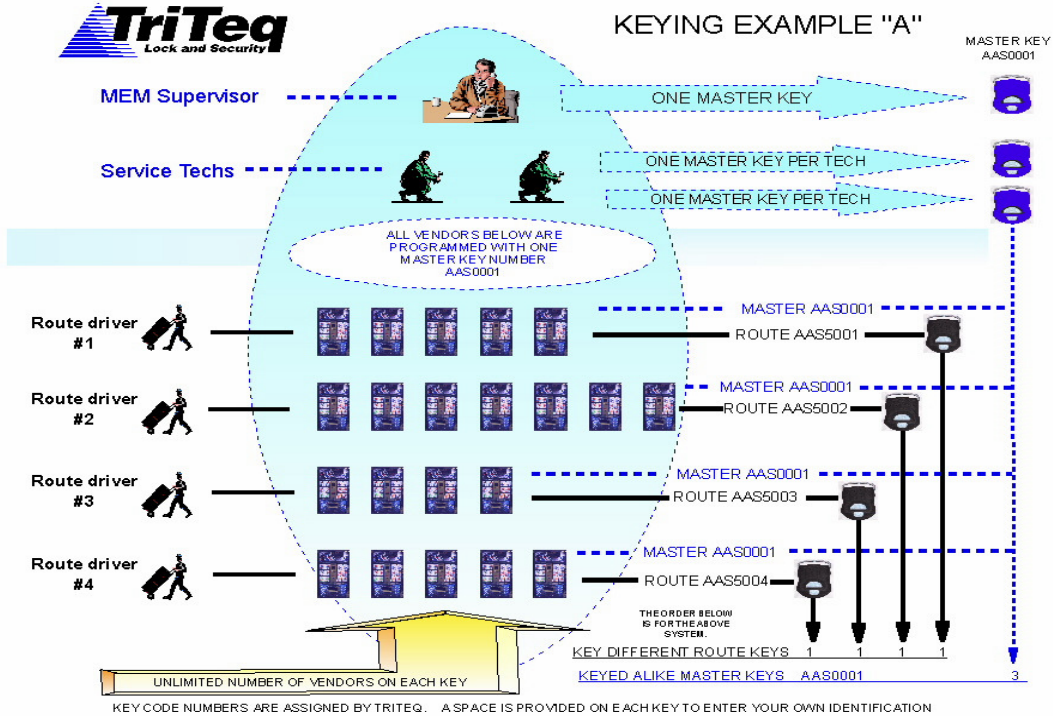
1. Locate the nut receptacle bracket plate tab as shown in FIG E
2. Using your finger, push the plate tab towards the inside of the vendor as shown.
3. Hold the plate for 2 to 3 seconds. Observe the Vendor Lock Box bayonet shaft.
4. The Vendor Lock Box Bayonet shaft should begin to rotate, it will then move towards the front of the vendor. The plate tab can be released anytime after the bayonet begins to move towards the front of the vendor.
5. The locking cycle ends when the bayonet shaft stops moving and the flat areas are horizontal..
6. Position the Key Fob in front of the vendor on the side of the product select button and press the Key Fob Button. The light should come on bright.
7. If the new Key Fob was “learned” (programmed) into the Vendor Lock Box properly the bayonet shaft will begin to extend itself towards the rear and return to the unlocked position. (Flats will be vertical).



**NOTE:** It is important to test the new Key program **BEFORE** you close the door! Because this door has an automatic closing function there is a possibility that you may lock yourself out of the vendor!

If the new Key is not accepted and the door is locked the Vendor Lock Box may “remember” the prior Key code that was in it before you attempted to “learn” (program) in the NEW code. Use the diagnostic lock reader to determine which code is programmed in. (See service section)

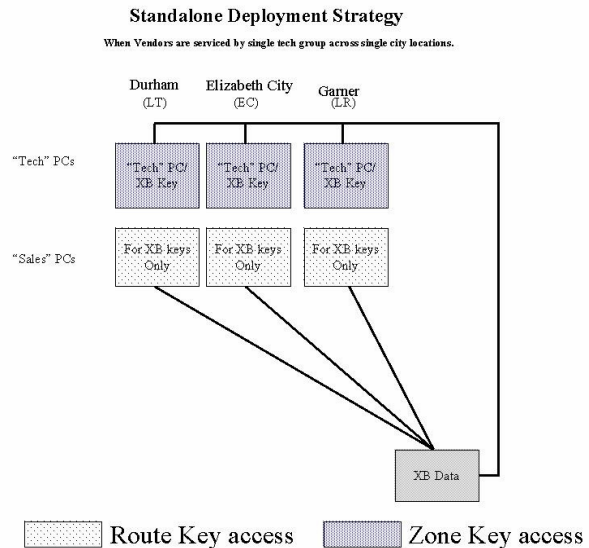
# Key Deployment Strategies



In this key example, there are three keys numbered AAS0001. These are the supervisor/service tech keys and have access to all machines in the collection. Route keys AAS5001, AAS5002, AAS5003, and AAS5004 are all keyed different. These will only have access to machines programmed with the same key number. This example demonstrates one location with multiple users, routes, and machines. The only constraint in this scenario is the city code used. All users must be set to the same city code. The database and all the users in this scenario are serviced on one PC. Audit data can be run anytime from this single installation.

## Keying Example B

In this example, different locations are involved. The same expanse can occur here for each of the Sales PC's involved. Meaning to say 4 drivers can be utilized at each of the locations. Diagrammatically it looks different because we are looking one level up. The location from the previous example is now three locations. This means to say four PCs sharing one database can support multiple route key numbers and still one zone key number. This looks very similar to Key example A, but the locations are many instead of one. To demonstrate this, use the locations from this diagram. Each





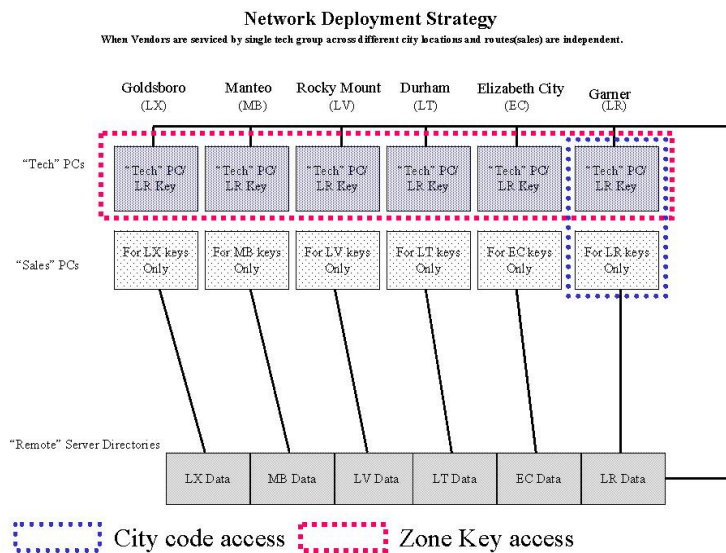
of the locations can be assigned a route key number group. This would create a scenario XBA5001, XBA5002, XBA5003, and XBA5004 for a set of 4 route drivers at one location. A second location would have a set of keys numbered XBA7001, XBA7002, XBA7003, and XBA7004. The route drivers would be able to work on machines only in their route and also in their own territory. A driver from XBA7001 would not be able to access a machine in the XBA5001 group and vice versa.

The service technician keys would be numbered under 5000 by necessity. With this in mind the keys would have to be numbered under 5000 and they would also have to be similar keyed. For this we'll number the keys XBA0711. Since there are 3 locations, 3 keys can be made all keyed alike. This would enable the service technicians to work on a machine regardless of the location.

Audit data would be available from any location since the database is shared across all locations.

## Keying Example C

This example differs only in that the data resides in different locations. Again the Route drivers can access only their machines in their own territory. Technician keys can access a machine regardless of the location. Accessing the audit data will be a little bit different. For each of the locations, the route driver key information will be accessible to their respective local PC. It will also be available to the PC servicing the zone keys. Audit data can be run from this PC which will cover not only local data, but all machine data the zone keys have visited.



## Section 3 Auto-Traq

### Auto-Traq Interface Software Overview

The lock(s), Key(s), and computer are all linked through the Auto-Traq Interface software. There are two numbers associated with the Key Fob. A serial number and a Key Code number. The Key Fob's internal computer has the serial number installed permanently. As explained earlier, the Key Code is engraved on the case. (i.e. ACA5004) etc. TriTaq can provide the Key Codes as Keyed different or Like Keyed (all the same). The Key Fob is intended to be assigned to a particular individual. If the Key Fob is used in the plant it can be called Spare #1 or Shop #1 etc. The Auto-Traq software requires you to identify the Key Users so the Key user can be monitored.



The Vendor Lock Box has its own permanent serial number that also cannot be altered. The Vendor Lock Box serial number is used to give each vendor a unique identification. The Vendor Lock Box serial number is encrypted for security purposes. The Auto-Traq Interface computer software is used to first set up the Key Users and identify the Vendor Locks that are in the Bottlers' area. After setting up the vendor and field installation the vendor memory will record any Key Fob that was either successful or was denied access. The Key Fob will bring this data back to the Auto-Traq computer database through the cradle communication. If a Key Fob is lost, stolen, etc. the audit data is still in the Vendor Lock Box and will be collected by the new Key Fob (or any other Key Fob) the next time the Key Fob visits the vendor and is successful or unsuccessful in opening it. After the data is brought back with the Key Fob to the computer, the computer sorts the data and eliminates the duplicate events. The data is then available for the Bottler to sort / view in any number of ways. The Auto-Traq software also give you the advantage of effectively turning the Key Fob ON and OFF for a variety of constraints.

**NOTE:** On the initial order, the Keys are shipped to Bottlers set-up to operate for 4500 accesses, unlimited hour time and 6 months of operation. Keys that are ordered after the initial implementation will be shipped inoperative. Since many locations are using the Auto Traq keys the first key operation will require some patience in set up because of the vast amount of data that has been collected to date by the Key Fob's.

### Installation FIG F

The mechanical parts of the computer interface consist of the cradle, cable, power supply for cradle, and the computer with software.

#### Computer requirements

The computer must be running Windows 98, WinNT, Win 2000 service pack 2, or Win XP. You'll also need a minimum of 300 MB available for data storage, 128 RAM, CD-ROM drive, connection to a printer, and it is suggested that a ZIP or other data storage device is available for system back up.

1. Plug the low voltage power supply cable from the power supply transformer into the side of the cradle power port.
2. Plug in the serial cable from the cradle into COM Port #1 on the PC.
3. Power up the PC. Observe that the cradle green (left side) power light is ON. If not shut off the computer, reconnect the power to cradle and start computer over. The RED light (right side) indicates the software is not running yet.

**NOTE:** It is important that the serial port be available to the cradle. The software is not Plug & Play and will not seek out an open port.



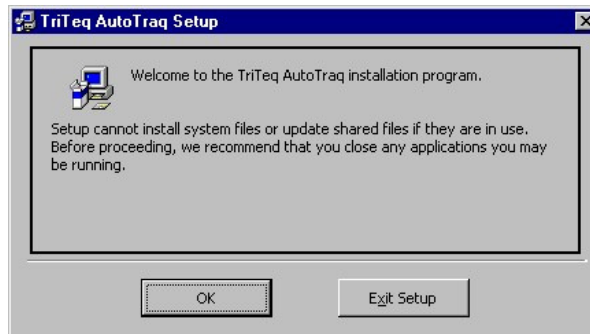


NOTE: There is a label on the bottom of the cradle. This label should not be removed, the serial number on the bottom will be used to register the cradle to your computer.

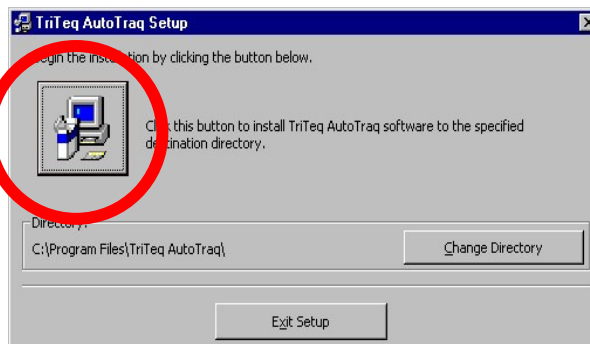
4. Put the Auto-Traq Interface CD into the drive, double click on the appropriate drive letter on your computer. You can click on the Adobe folder and it will allow you to see an electronic copy of this manual. To begin the installation click on Set-Up. The software will begin to install the TriTeq Auto-Traq Interface software.

NOTE: The software requires various drivers to be installed. The installation software checks for these drivers and will install them. This may require you to start your computer over and begin the installation a second time after the drivers are installed.

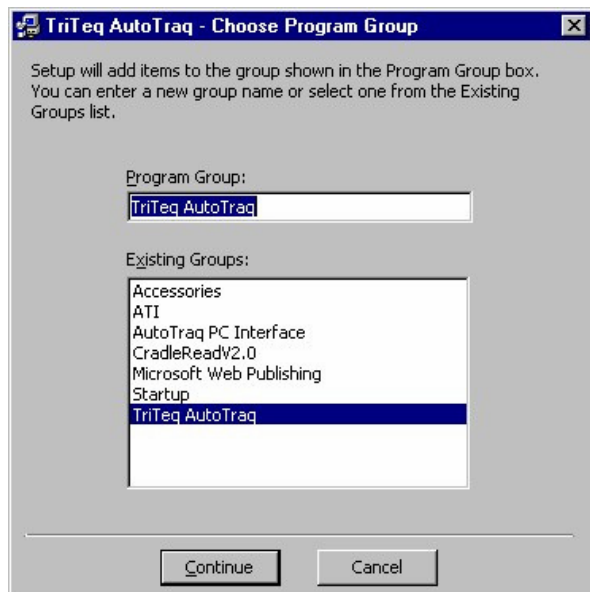
When this screen appears, Press "OK" to continue.



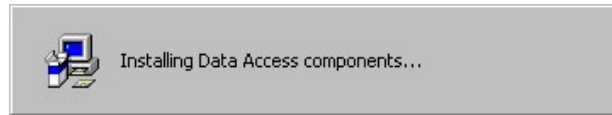
Next the installation screen will appear. Click on the setup icon to begin the installation.



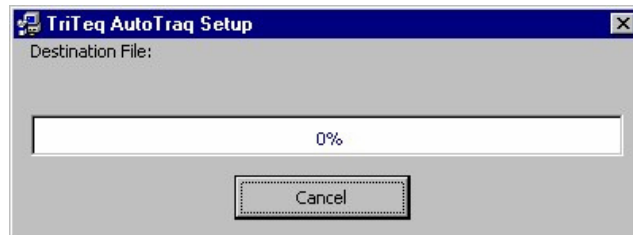
Setup may ask where to place the icons. The default settings are fine and can be selected by clicking on the continue button.



At this point these screens may appear:



These screens are normal and should clear themselves as the installation continues.



If these messages appear:

Keep the original files by answering yes. There may be a few of them so be sure to answer yes to all of the windows that pop up. Most of them will probably be a type of \*.dll file as seen here.

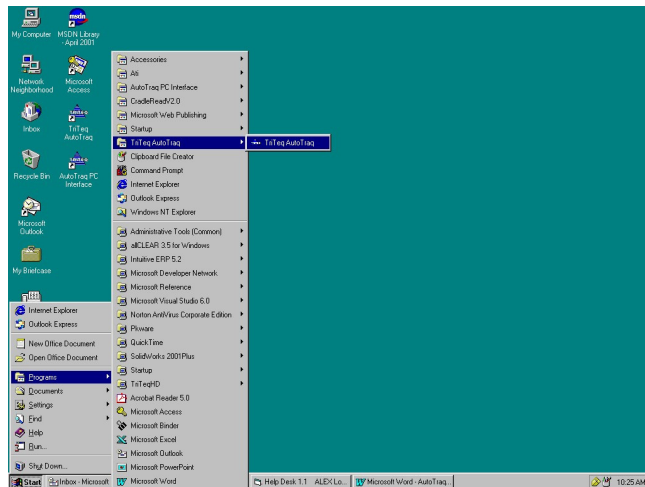


If everything is successful, this form will appear.

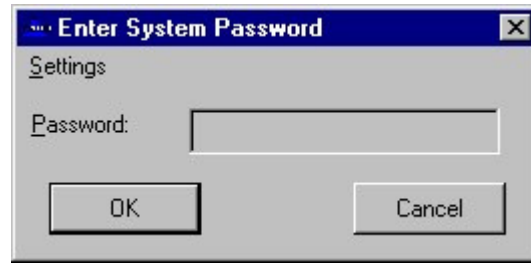


### Registration

After installation start the software by using the Start / Programs / TriTeq Auto Traq Interface icon in the start bar. After the software starts it will begin the registration process.



The first screen to come up is a signin screen. The default password is pepsi. Entering in the password and clicking OK will clear this screen.



Once past sign in one, maybe two screens will appear. One will be the unregistered software form. This is normal until registration is finished. Once completed, this message should not appear again.

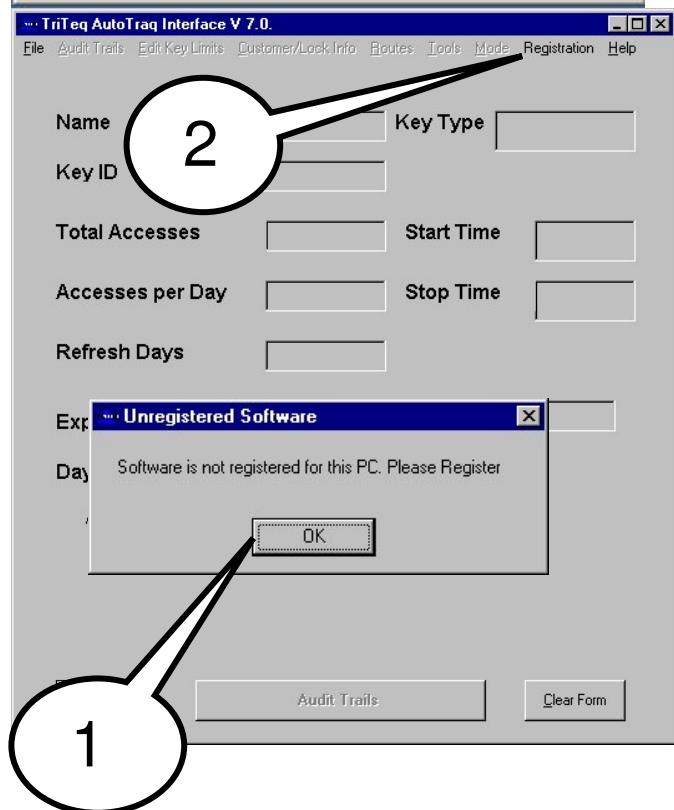


If, on the other hand, this screen appears; you must check to see what is preventing the software from communicating with the hardware. Possible causes for this problem are: Power is not plugged into the cradle. The data cable is not connected at both ends.



A device such as an internal modem is occupying the COM port Autotraq uses. Other Software is using the COM port Autotraq uses. Check to make sure the port is open and available.

The Screen on the right appears after the software has been started and not been registered.



1. The Box insert will appear click on the OK. Button.
2. Next Go to the Task bar and click on Registration.

Clicking on the registration tab in the menu bar brings up this registration form.

Looking on the bottom of the cradle, enter in the cradle serial number. ( Not the CC717 model number ).

Looking on the CD in the drive, enter in the CD serial number.

Enter in the Contact name and rest of the information as shown.

**NOTE: It is important to enter all the information into the form. This information will be matched to TriTeg records for your facility. If they do Not match the software registration number can not be generated.**

**Software Registration Menu**

Enter Cradle Label#:  CD Software Label:   Check this box if you are an independent

Bottler Name:  Business Unit ( if applicable ):

Market Unit ( if applicable ):

Contact Name: First and Last  Address:

City, State:  ZIP:

Phone: xxx-xxx-xxxx  Fax: xxx-xxx-xxxx

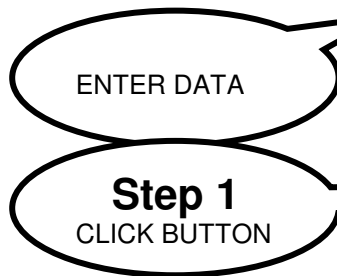
Email:

Step1: Click Here After Entering Above

Step2: If this station is connected to a printer click on "Get Registration button to print out your registration. If not, write down all info shown here and fax it to: 847 640-7008

Step3: Click Here After Receiving Registration #

Once the registration form on the right has been properly filled out next click on the Step 1 "Generate System ID # " Button.



**Software Registration Menu**

Enter Cradle Label#:  CD Software Label:   Check this box if you are an independent

Bottler Name:  Business Unit ( if applicable ):

Market Unit ( if applicable ):

Contact Name: First and Last  Address:

City, State:  ZIP:

Phone: xxx-xxx-xxxx  Fax: xxx-xxx-xxxx

Email:

Step1: Click Here After Entering Above

Step2: If this station is connected to a printer click on "Get Registration button to print out your registration. If not, write down all info shown here and fax it to: 847 640-7008

Step3: Click Here After Receiving Registration #

After the Button has been clicked a Registration number appears in RED at the bottom.

Press the Step 2 Get registration number button



**Software Registration Menu**

Enter Cradle Label#:  CD Software Label:   Check this box if you are an independent

Bottler Name:  Business Unit ( if applicable ):

Market Unit ( if applicable ):

Contact Name: First and Last  Address:

City, State:  ZIP:

Phone: xxx-xxx-xxxx  Fax: xxx-xxx-xxxx

Email:

Step1: Click Here After Entering Above

Step2: If this station is connected to a printer click on "Get Registration button to print out your registration. If not, write down all info shown here and fax it to: 847 640-7008

Step3: Click Here After Receiving Registration #

123456789

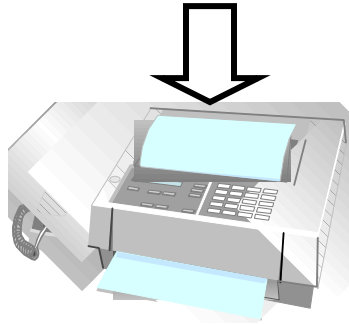
After this button is pressed the software will generate a form and send it automatically to your printer with the above information. This information needs to be sent via fax to TriTeg so TriTeg can register the software using the RED code ID #. TriTeg will issue you a special code that needs to be entered into the software. When this code is received, return to this screen and Press the Step 3 Button "Go Next". If the computer is shut off or the software closed before you receive the code number. Return to this place and press the Step 3 Button "Go Next" . The information previously entered will not be visible but it is stored in a special memory location.



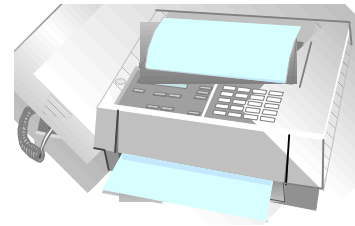
Step 3 Printer prints Form



Step 4 Fax Form to TriTeq



Step 5 TriTeq faxes form back

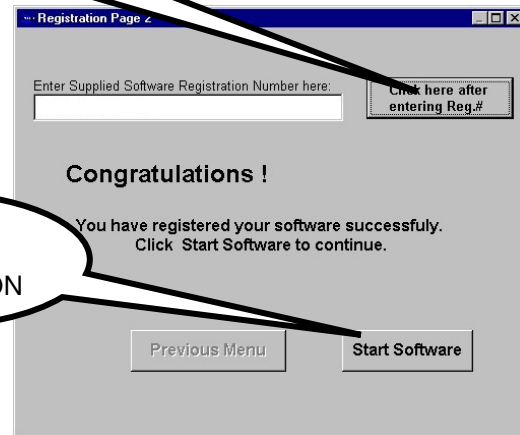
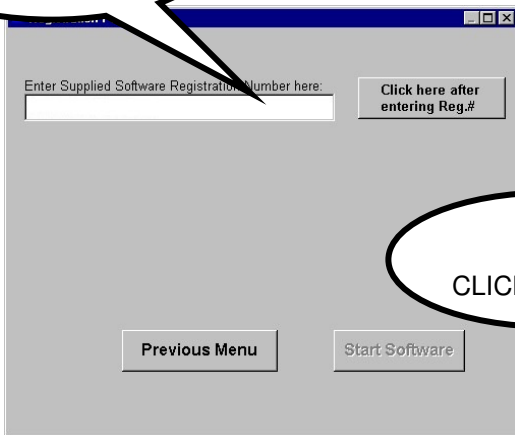


When the Registration Code ID arrives, enter it here and then click on the "Click here after entering reg. # " Button.

**6**  
ENTER DATA

**7**  
CLICK BUTTON

**8**  
CLICK BUTTON



Autotraq Version 7.0 (software model 747) installations must now see the Database Location section before moving on. Autotraq Version 6.6 (software model 707/717) can continue on with the next step.

## SOFTWARE USAGE

Once software 7.X.X is installed, start software and use the default password of “pepsi” in lower case letters to start your software. Please click on Help button near the top right hand corner of the main page and then click on “Help File” to see different topics on software usage.

## Section 4 Service Tools

There are two service tools that are used extensively to troubleshoot the electronic lock. The first is the light on the Key Fob itself and separately the lock reader.

### The Key Fob Light

There are two methods for using the Key Fob diagnostics. The first two tests can be performed when the Key Fob is out of range of a Vendor Lock Box. The next tests require the Key Fob to be on the side of the middle button (or sensor) on the vendor and attempting to open the vendor (normal opening mode).

For all tests the light flashes will time out after a few seconds.

**NOTE:** Do not hold the button down, touch the button remove your finger and observe the light.

The Key Fob light has three states:

- Fast flash = ("seeking" or "looking" for a Vendor Lock Box )
- Bright slow flash = ( diagnostic mode )
- Bright steady 'ON" = ( communication mode)

In all cases the seeking ( "fast flash" ) begins immediately after pressing the Key Fob button. The diagnostic mode ("bright slow flashes") occur at the END of the fast flash interval. The steady "ON" indicates that the Key Fob is communicating with the Lock Box or Cradle.

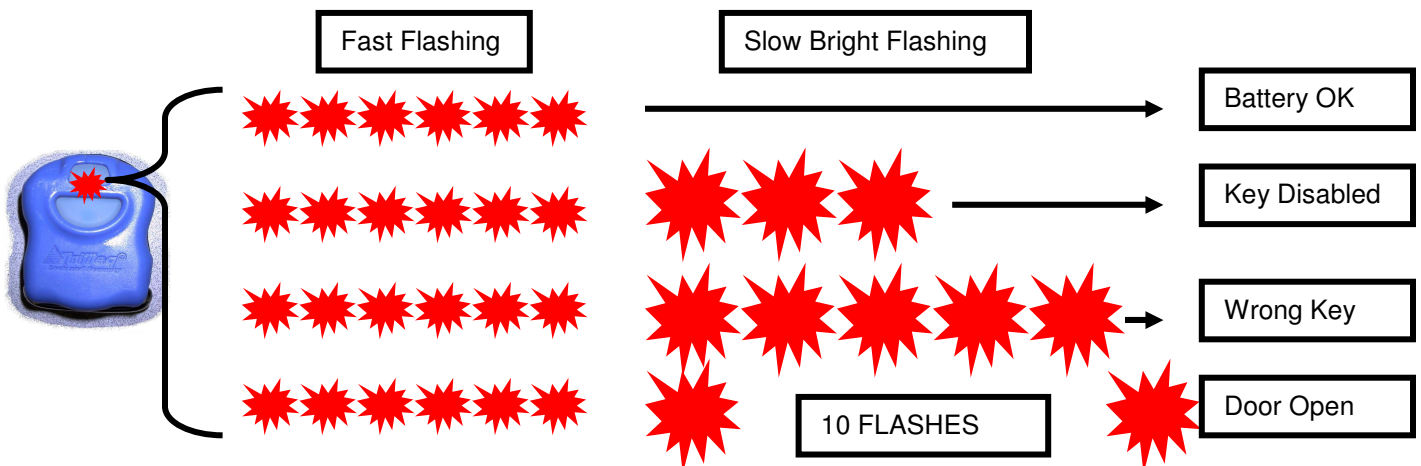
**Test one:** FOB battery: Press the button and observe the light; No light indicates dead battery.

**Test two:** Expired Key Fob: (Auto-Traq only) Press the button and observe the light; The light flashes bright 3 times. This indicates the Key Fob limits are expired and will not work any vendor.

**NOTE:** The above two tests should be performed before the Route Driver / Salesman or Service Tech leaves the Bottler facility.

**Test three:** Wrong Key Fob: While positioning the Key Fob on the side of the button on the 12 button HVV vendor, press the button and observe the light; If, after the fast flashes, the light flashes bright 5 times the Vendor Lock has been programmed to another Key Code.

**Test four:** Vendor door open: While positioning the Key Fob on the side of the button on the vendor, press the button and observe the light; If after the rapid flashing, the light flashes bright 10 times the door is unlocked and not pulled open.





## Lock Reader

The lock reader is a portable tool that is operated in the same fashion as a Key Fob. It does **not** open vendors but, it will give helpful information when identifying locks and keys programmed to the locks. It also helps when diagnosing a problem should something happen. The sole button next to the display toggles between views of Bottler codes, key numbers, lock serial numbers, and lock diagnostics. It is available from TriTeq directly and uses a 9-volt battery.

### Lock Reader Example

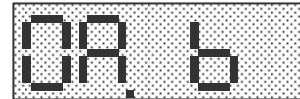
This is a lock reader reading from a test lock here at TriTeq Lock. The Keys programmed into this lock are ABA5001 and ABA0008 for lock serial number 1179981. At the time of the reading, the lock was open.

The reader collects and displays 7 bits of data. To begin reading the data, point the reader at the lock in a similar fashion as a key FOB. Press the button once and data should appear in the display window. Once the initial read is made and information is displayed, the reader need not be pointed at the lock. While information is still in the display window, press the button to cycle to the next data bit. When the last data bit is reached, the cycle returns to the first data bit and the process repeats. This will continue until the button is not pushed and the display times out.

The first two button pushes display information about the programmed Route Key.

#### Button Press 1

The XXX indicates the Bottler City code for the ROUTE Key Fob. This is representative data from the first button press. It reads a city code of AB for a programmed Route key.



0A . 6

#### Button Press 2

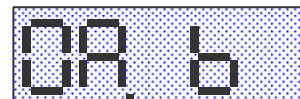
The X,1,2,3,4 is the next five digits of the ROUTE Key Fob. This represents the key's number A5001.



The next two button pushes display information regarding a Zone Key.

#### Button Press 3

The XXX indicates the Bottler City code for the ZONE Key Fob



0A . 6

#### Button Press 4

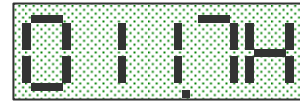
The X,1,2,3,4 is the next five digits of the ZONE Key Fob.



The next three button pushes display information regarding the lock.

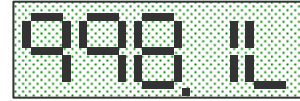
**Button Press 5**

This shows the first four digits of the Vendor Lock Box serial number. The first part of the number is 0117



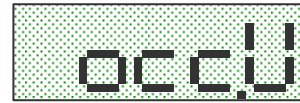
**Button Press 6**

This shows the last four digits of the Vendor Lock Box serial number. The last part of the number is 9981.



**Button Press 7**

This is the diagnostic display for switches inside of the lock. The characters to the left of the period relay switch status at the current read time. The characters on the right of the period display the lock status. ( U = Unlocked door. L = Locked door)



**L  
o  
c  
k  
D  
a  
t  
a**

Common Results for version 1.15 Lock Readers

Door Status	Lock Condition	Lock Reader Datum 7 Results
Door Opened, Locked	Receptacle Switch Problem	CCC.U
Door Opened, Unlocked	Lock Ok	OCC.U
Door Closed, Locked	Lock Ok	CCO.L
Door Closed, Unlocked	Receptacle Switch Problem	OCC.U
Door Open/Closed	Lock bad or no power to lock	----

Sometimes when a lock is new:

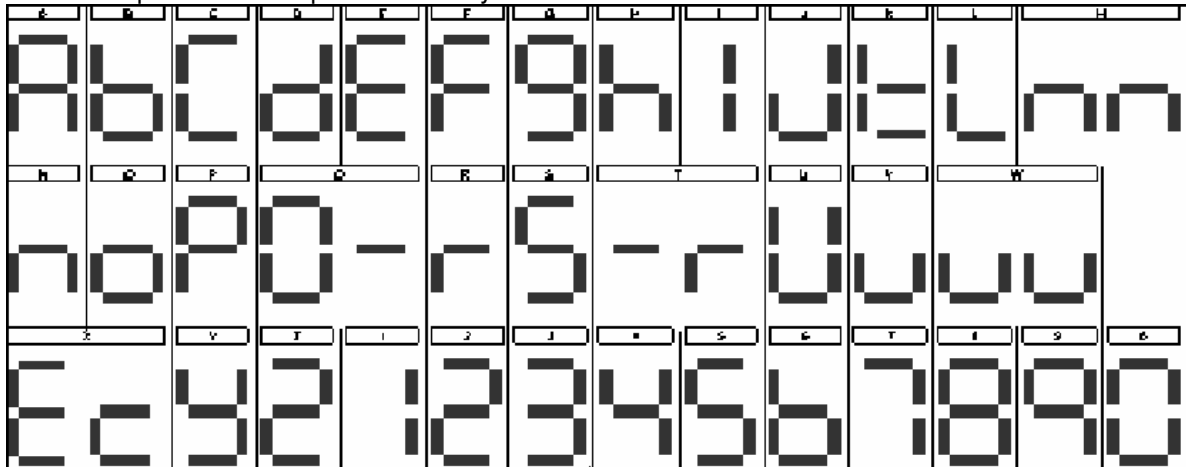
The factory code programmed into the lock should be P1 and will appear in both the Bottler city code and key number for the Routes portion of the Lock reader.



No Zone keys should appear in the lock. They will display an empty register in both Bottler city code and key number for the Zone portion of the lock reader.



This is a representative alphabet used by the lock reader.



## Troubleshooting Guide

<b>Problem: Door won't open</b>		
<b>Symptom</b>	<b>Possible Cause</b>	<b>Solution</b>
Key Fob light won't flash	Battery dead	Replace battery
	Key Fob defective	Replace Key Fob
Key Fob light flashes bright 5 times after placed in front of button	Different Key code in vendor See Section 2-3.	Use lock reader tool to determine proper code <a href="#">Read special note concerning reader</a>
Key Fob light flashes bright 3 times after placed in front of button	This is an Auto-Traq Key Fob that is expired. See Section 3-7.	Refresh Key Fob
Key Fob light flashes bright 10 times after placed in front of button	Door is unlocked See Section 2-1.	Pull door open and close it again
Key Fob light flickers bright and dim erratically	Flicker from Florescent Bulbs, possible cold weather issue.	Unplug vendor and attempt to open before lights turn ON or install Button Decal.
Key Fob light flashes fast only	No power to lock	Plug battery back up into port and press button and try to open with Key Fob
Key Fob light flashes dim	Key FOB temp is below operation range	Remove Key Fob to warm area and retry
With back up battery pack plugged in. Key Fob light is ON but Lock doesn't open. Motor does not run.	Batteries are dead in battery pack.	Replace batteries and try over
Key Fob light is on bright and motor is heard running	Motor gear box failure	Use emergency opening process and replace Lock
<b>Problem: Door won't lock</b>		
<b>Symptom</b>	<b>Possible Cause</b>	<b>Solution</b>
Bayonet does not turn when the receptacle door is pushed.	Bad receptacle switch	Test by jumping switch if unit runs, replace switch
	Bad Lock switch in Lock box	Use Lock reader tool to determine Lock switch condition and replace Lock after diagnosis
Receptacle switch works but when door is pushed closed it will not start locking	Receptacle switch housing is not fastened properly	Check the two screws that holds the switch housing in place and replace/repair as ness
	Adjuster screw on Lock is adjusted too tight	Readjust screw to extend bayonet
	Vendor is not level causing bayonet to miss the receptacle	Level door/vendor
	Inner Door aligned causing Bayonet to stick in.	Realign inner door.

<b>Problem: Display issues</b>		
<b>Symptom</b>	<b>Possible Cause</b>	<b>Solution</b>
Display shows Locked when Unlocked or vice versa	Voltage spike to the vending controller	Unplug vendor to reset display.
No Display when operating. (Lock OK)	Bad Lock Circuit Board	Replace
	Bad Wiring	Repair Wiring
<b>Problem: Program light issue</b>		
<b>Symptom</b>	<b>Possible cause</b>	<b>Solution</b>
Program light will not come on after program button is pressed	The program 'learn' button was not held ON long enough	Hold button for a until light is ON
	Bad Receptacle Switch	Use lock reader to determine switch condition and replace receptacle switch if required.
	Bad Receptacle switch wiring	Use lock reader to determine switch condition and replace receptacle switch if required.
Program light does not flash after new Key Fob is place in front of button	Bad lock box switch	Use lock reader to determine switch condition and replace lock box if required Read special note concerning reader.
	Battery in Key Fob dead	Replace as required, use alternate Fob to verify
	Key Fob was placed in wrong position	Retry
	Key Fob button was not pressed	Retry
	Bad lock box CPU	Replace lock box as required

## Section 5 Maintenance procedures

The lock itself requires very little maintenance. However there are provisions to adjust or maintain the following:

1. Inner door gasket tension
  2. Key FOB battery replacement
  3. Battery backup system
  4. Emergency opening process
  5. Lock removal
  6. Receptacle replacement
1. A screw mounted in the front of the Vendor Lock Box assembly is used to adjust the gasket tension. If the screw is over tightened the motor will stall and result in possible vendor damage. You should turn and test the door closing after turning the screw one half of one turn at a time, until the tension is set. FIG G
  2. Remove the three screws on the battery case to access the Key Fob battery. A special screw is used to prevent tampering. The tool for this screw is available from TriTeq. When replacing the battery on Auto-Traq Key Fob's the internal clock will be reset. The reset function will be visible on the Auto-Traq software. The computer will reset the clock automatically in Auto-Traq Key Fobs as they are refreshed.
  3. This electronic Vendor Lock Box has a provision to operate without vendor power or in the event that there has been a power failure. There is a back-up power connector located on the right side of the product delivery chute. FIG H After locating the connector, plug the back-up battery pack into it, press and hold the red button down on the battery pack and open the vendor normally with the proper coded Key Fob. To close the door, hold the red button down and push the vendor door closed normally.
- NOTE:** The red button must be pressed before opening or closing the door and should not be released until the lock has completed its opening or closing cycle(s).
4. There is a mechanical emergency back up system designed in to access the vendor in case of total lock failure. Please call TriTeq directly for the tools required and information on this process. This process does not require that the vendor be removed from the field.
  5. To remove the lock:
    - A. Unplug the 12-pin connector located at the bottom by depressing the locking lever and pulling down.
    - B. Using a socket with extension, remove the bolts holding the lock onto the side vandal panel.
    - C. Remove the two security bolts facing from the inside of the door towards the front. Remove the lock.
    - D. Remove the light 'pipe' by twisting it 90 degrees clockwise (viewed from front of vendor) and pulling it off the Vendor Lock Box cover.

To reinstall, reverse this procedure.



FIG G

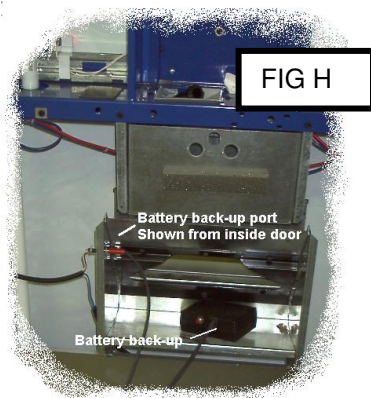


FIG H

6. To remove the receptacle:
  - A. Remove motor cover and unplug the wire harness.
  - B. Remove the four (Vendo) or three (Dixie) attaching bolts. (1/4-20, 7/16 head)

To reinstall, reverse this procedure.

7. Receptacle Switch (with housing)
  - A. Remove 2 Screws on top of the Receptacle.
  - B. Remove motor cover & unplug connection.

To reinstall, reverse this procedure

#### Known Issues

1. Cold Weather Flicker
2. Cold Weather FOBS (very early versions of standard keys only)
3. Software

Windows 95 ( Service pack 1 and earlier )

Hardware or Software communicating on COM1

Explorer 5.5 required

100/50 ft serial cable – noise when placing cable next to power lines.

Data line speed – refresh speed issue on netsoftware version

Lock Software v 1.4

Audit Info

Loose Power connection

4. Lock Reader code U0 is not P1

## **Section 6 Specifications:**

All Infrared components meet Federal guidelines for eye safety standards.

### **LOCK**

Main Power: 24-37 Volts DC, 800 Milliamperes

Aux. Power: 24-30 volts DC

Shipping Weight: 6.8 lbs.

Pull in stroke: 5/8"

Primary rotation angle to lock: 30 degrees

Temp range: 0 deg F- 180 deg F

Materials: P60 galv steel, Steel components plated and covered with dichromate, **All weather** Delrin molded plastic parts, commercial electronic parts and circuit board (glass filled), Mobil-One lubrication, DC perm magnet motor drive, and gold contact sealed switches.

Connector: Mini-fit Jr. 12 pin

IR Transmission device meets Federal specifications for eye safety.

### **KEY FOB**

Battery: CR 2032

Case: Polycarbonate with proprietary IR component.

Ring: Plated steel

Temp Range: 10 deg F-180 deg F

IR Transmission device meets Federal specifications for eye safety.

### **RECEPTACLE;**

Materials: P60 galv steel, gold contact sealed switch, and molded plastic parts,

Connector: Mini-fit Jr. 2

Shipping weight: .6 lbs.

### **BACK-UP BATTERY PORT ON VENDOR**

Connector: Mono audio female plug 3.5 mm dia

### **BACK-UP BATTERY PACK**

(3) 9-volt commercially available alkaline batteries. Output plug 3.5-mm male mono audio.

### **READER**

1) 9-volt commercially available alkaline battery. ( Duracell or Eveready only )

### **CRADLE**

No user serviceable parts. Case ABS. DB-9 male serial port, Low Voltage DC input port.

IR Transmission device meets Federal specifications for eye safety.

**NOTE:** All used batteries should be disposed of properly.

**!! WARNING !! Batteries used in this device are not rechargeable.**

The lock and its accessories are assembled in the United States of America using components manufactured in the United States, Canada, Mexico and China.



## **Section 7 Trademark Acknowledgements:**

TriTeq, Mobil-One, Mini-fit Jr., IRDA, Microsoft Access, Auto-Traq, Dixie-Narco, Vendo, Delrin, Adobe are registered US trademarks.

“PEPSI, PEPSI-COLA and the Pepsi Globe design are registered trademarks of PepsiCo, Inc” and are reprinted with permission.

US and Foreign Patents pending, Copyrighted, all rights reserved. Duplication prohibited without written consent of Triteq LLC. Printed in the United States.

### Disclaimers:

Specifications are subject to change without notification.

Certain software features shown may not be fully functional at time of release.

Triteq assumes no liability for any bodily injury resulting in the use of this product.

All correspondence to be addressed to: TriTeq LLC, 701 Gullo, Elk Grove, IL 60007