



LOCK SYSTEM USERS MANUAL

PEPSI
H V V

High Visibility Vendor

Revision B.
October 2009



701 GULLO AVENUE ---ELK GROVE, IL---60007
PHONE 847-640-7002---FAX 847-640-7008
email—calin@triteqlock.com

Lock Reader

The lock reader is a portable tool that is operated in the same fashion as a Key Fob. It does **not** open vendors but, it will give helpful information when identifying locks and keys programmed to the locks. It also helps when diagnosing a problem should something happen. The sole button next to the display toggles between views of Bottler codes, key numbers, lock serial numbers, and lock diagnostics. It is available from TriTeq directly and uses a 9-volt battery.

Lock Reader Example

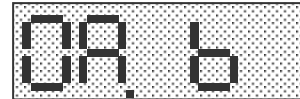
This is a lock reader reading from a test lock here at TriTeq Lock. The Keys programmed into this lock are ABA5001 and ABA0008 for lock serial number 1179981. At the time of the reading, the lock was open.

The reader collects and displays 7 bits of data. To begin reading the data, point the reader at the lock in a similar fashion as a key FOB. Press the button once and data should appear in the display window. Once the initial read is made and information is displayed, the reader need not be pointed at the lock. While information is still in the display window, press the button to cycle to the next data bit. When the last data bit is reached, the cycle returns to the first data bit and the process repeats. This will continue until the button is not pushed and the display times out.

The first two button pushes display information about the programmed Route Key.

Button Press 1

The XXX indicates the Bottler City code for the ROUTE Key Fob. This is representative data from the first button press. It reads a city code of AB for a programmed Route key.



ROUTE KEY FOB

Button Press 2

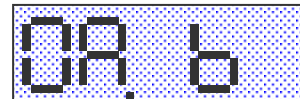
The X,1,2,3,4 is the next five digits of the ROUTE Key Fob. This represents the key's number A5001.



The next two button pushes display information regarding a Zone Key.

Button Press 3

The XXX indicates the Bottler City code for the ZONE Key Fob



ZONE KEY FOB

Button Press 4

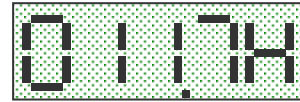
The X,1,2,3,4 is the next five digits of the ZONE Key Fob.



The next three button pushes display information regarding the lock.

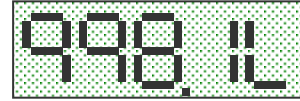
Button Press 5

This shows the first four digits of the Vendor Lock Box serial number. The first part of the number is 0117



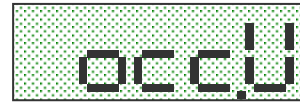
Button Press 6

This shows the last four digits of the Vendor Lock Box serial number. The last part of the number is 9981



Button Press 7

This is the diagnostic display for switches inside of the lock. The characters to the left of the period relay switch status at the current read time. The characters on the right of the period display the lock status. (U = Unlocked door. L = Locked door)



**L
o
c
k
D
a
t
a**

Common Results for version 1.15 Lock Readers

Door Status	Lock Condition	Lock Reader Datum 7 Results
Door Opened, Locked	Receptacle Switch Problem	CCC.U
Door Opened, Unlocked	Lock Ok	OCC.U
Door Closed, Locked	Lock Ok	CCO.L
Door Closed, Unlocked	Receptacle Switch Problem	OCC.U
Door Open/Closed	Lock bad or no power to lock	----

Sometimes when a lock is new:

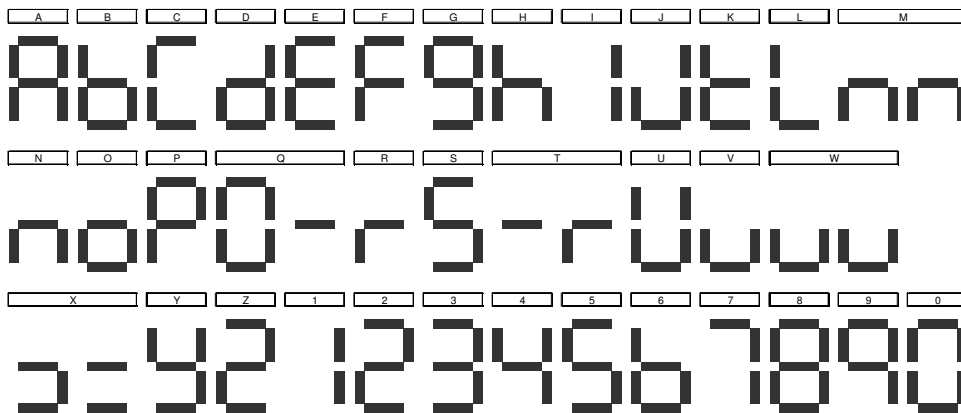
The factory code programmed into the lock should be P1 and will appear in both the Bottler city code and key number for the Routes portion of the Lock reader.



No Zone keys should appear in the lock. They will display an empty register in both Bottler city code and key number for the Zone portion of the lock reader.



This is a representative alphabet used by the lock reader.



Troubleshooting Guide

Problem: Door won't open		
Symptom	Possible Cause	Solution
Key Fob light won't flash	Battery dead	Replace battery
	Key Fob defective	Replace Key Fob
Key Fob light flashes bright 5 times after placed in front of button	Different Key code in vendor See Section 2-3.	Use lock reader tool to determine proper code Read special note concerning reader
Key Fob light flashes bright 3 times after placed in front of button	This is an Auto-Traq Key Fob that is expired. See Section 3-7.	Refresh Key Fob
Key Fob light flashes bright 10 times after placed in front of button	Door is unlocked See Section 2-1.	Pull door open and close it again
Key Fob light flickers bright and dim erratically	Flicker from Florescent Bulbs, possible cold weather issue.	Unplug vendor and attempt to open before lights turn ON or install Button Decal.
Key Fob light flashes fast only	No power to lock	Plug battery back up into port and press button and try to open with Key Fob
Key Fob light flashes dim	Key FOB temp is below operation range	Remove Key Fob to warm area and retry
With back up battery pack plugged in. Key Fob light is ON but Lock doesn't open. Motor does not run.	Batteries are dead in battery pack.	Replace batteries and try over
Key Fob light is on bright and motor is heard running	Motor gear box failure	Use emergency opening process and replace Lock
Problem: Door won't lock		
Symptom	Possible Cause	Solution
Bayonet does not turn when the receptacle door is pushed.	Bad receptacle switch	Test by jumping switch if unit runs, replace switch
	Bad Lock switch in Lock box	Use Lock reader tool to determine Lock switch condition and replace Lock after diagnosis
Receptacle switch works but when door is pushed closed it will not start locking	Receptacle switch housing is not fastened properly	Check the two screws that holds the switch housing in place and replace/repair as ness
	Adjuster screw on Lock is adjusted too tight	Readjust screw to extend bayonet
	Vendor is not level causing bayonet to miss the receptacle	Level door/vendor
	Inner Door aligned causing Bayonet to stick in.	Realign inner door.

Problem: Display issues		
Symptom	Possible Cause	Solution
Display shows Locked when Unlocked or vice versa	Voltage spike to the vending controller	Unplug vendor to reset display.
No Display when operating. (Lock OK)	Bad Lock Circuit Board	Replace
	Bad Wiring	Repair Wiring
Problem: Program light issue		
Symptom	Possible cause	Solution
Program light will not come on after program button is pressed	The program 'learn' button was not held ON long enough	Hold button for a until light is ON
	Bad Receptacle Switch	Use lock reader to determine switch condition and replace receptacle switch if required.
	Bad Receptacle switch wiring	Use lock reader to determine switch condition and replace receptacle switch if required.
Program light does not flash after new Key Fob is place in front of button	Bad lock box switch	Use lock reader to determine switch condition and replace lock box if required Read special note concerning reader.
	Battery in Key Fob dead	Replace as required, use alternate Fob to verify
	Key Fob was placed in wrong position	Retry
	Key Fob button was not pressed	Retry
	Bad lock box CPU	Replace lock box as required