

TriTeq News



Securing Your Success



RouTeq Safe Set-up & Installation

TriTeq

701 Gullo Avenue
Elk Grove, Illinois 60007
888-603-5625
www.triteqlock.com

Contents

- **Parts list**
- **Tools required**
- **Installation**
- **Maintenance**
- **Trouble shooting**
- **Warranty**



TriTeq Lock and Security

RouTeq Safe Installation & Instruction

Parts supplied:

- Shell & safe assembly
- 2 keys for plunger locks
- 9-volt alkaline battery
- AC power supply

Tools required:

- 12-volt power source (vehicle battery),
- Mounting hardware
- Tools for mounting
- Pencil

Installation

Step 1: Connect the power supply

Connect 12-volt power supply from the vehicle battery or the AC power supply depending upon your application. Note the polarity of wire (black/white(+) & black/black(-)). If connecting to the vehicle battery power make sure there is continuous power to the safe even when the ignition is off. Thread the power connector through the shell of the safe (fig.1). Next, plug power connector into the receptacle on the back of the safe (fig. 2). Confirm 12-volt power is being supplied to safe by pressing the keypad...the green LED will light up.



Figure 1



Figure 2



TriTeq Lock and Security

Installation & Instruction cont'd

Step 2: Programming the user code

Program user code into safe as follows:

- Insert a pencil into the opening on the back of the safe assembly (refer to Figure 3). Press and hold the program button on the CPU until a yellow light turns on. You will see the light shining from the programming hole on the rear of the safe.
- On the keypad enter the 5-digit factory code provided on label.
- Next enter your own 5-digit code (user code).
- At this point, two codes will unlock the safe, the factory code on the label and the user code. Try each code to confirm programming. If user code does not open the safe, repeat this step and verify again.



Figure 3

Step 3: Mounting the safe

Disconnect the power supply connection from the safe but leave the cord threaded through the shell (refer to Figure 1). Mount the shell of the safe to the desired location inside a truck or on a plant or office wall (refer to Figure 4 for mounting hole locations).



Figure 4



TriTeq Lock and Security

Installation & Instruction cont'd

Step 4: Secure safe in the shell

Reconnect the power supply to the safe as shown in Figure 2. Slide safe into the shell and push in the plunger locks so safe is securely mounted into the shell (refer to Figure 5).

Step 5: Install 9-volt alkaline battery

The 9-volt battery is to preserve the clock in the safe. It is not a battery back-up to lock or unlock the safe. Install the battery inside the safe and place it in the battery holder located on the inside rear of the safe (refer to Figure 6).



Figure 5



Figure 6

Step 6: Locking the safe

Attach a TriTeq AutoTraq key to the locking mechanical key ring set you intend to put in the safe (refer to figure 7).

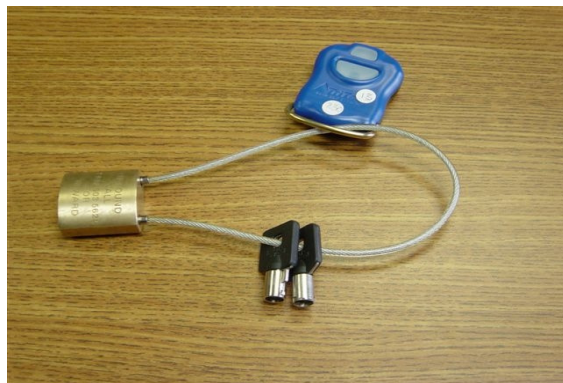


Figure 7



TriTaq Lock and Security

Installation & Instruction cont'd

Step 6 continued:

Lock keys into safe by placing the mechanical key-ring inside the safe. Slide the AutoTraQ key into the black holder mounted on the inside of the safe door (refer to Figure 8). Press the button on the AutoTraQ key, see the LED flash rapidly and close the safe door.



Figure 8

When the safe door is closed, the infrared signal from the key communicates through a shutter in the wall of the safe (the shutter only passes the infrared signal when the door is closed). The safe door should latch closed and the keys are now secured. Time and date of lock events and the previous unlock events are stored in the AutoTraQ key.

Step 7: Opening the safe

When it is time to retrieve the keys, enter either the factory or the user 5 digit code on the keypad. The lock will unlatch and the door will open. The time and date of the unlock event is stored in the lock memory and will be uploaded into the key during the next lock event.

Step 8: Monitoring the safe activity

When the AutoTraQ key is refreshed in the TriTaq docking station or cradle, the safe lock and unlock events will be uploaded into the database and will be able to be viewed in CSV or Excel format.



TriTeq Lock and Security

Installation & Instruction cont'd

Recommended Safe Maintenance

In order to insure the safe remains in proper operating condition, the following maintenance is recommended.

1. Change the 9-volt battery once per year. Changing the battery insures the clock remains accurate when power is lost when the safe is locked.
2. Inspect the shutter to make certain it has not been tampered with and does not allow the key to pass the infrared light when the safe door is open.
3. Inspect to make sure the AutoTraq key has not been tampered with and has not been separated from the key ring containing the mechanical keys. It may help to attach a seal strap to the AutoTraq key that would need to be cut in order to separate it from the mechanical keys. There needs to be a way to prevent the key from being removed or tampered with to maintain system integrity.

Trouble shooting

If the safe is not operating properly contact TriTeq at **847-640-7002** for technical support. If the issue cannot be resolved, TriTeq will issue an RMA number, unlock the safe from the shell and return it to TriTeq in a box labeled with the RMA number. If you have anything in the safe and it will not unlock, cut open the safe and remove the contents prior to shipping.



TriTeq Lock and Security

Limited Warranty

SELLERS LIMITED WARRANTY Seller warrants to Buyer that upon delivery to buyer the Products purchased hereunder shall conform to the applicable manufacturers specifications for such Products and that any value-added work performed by Seller on such Products shall conform to applicable Buyers specifications relating to such work. Seller makes no other warranty, express or implied, with respect to the Products. IN PARTICULAR, SELLER MAKES NO WARRANTY RESPECTING THE MECHANICALITY OF THE PRODUCTS OR THEIR SUITABILITY OR FITNESS FOR ANY PARTICULAR PURPOSE OR USE OR RESPECTING INFRINGEMENT. With respect to Products which do not meet applicable manufacturers specifications and with respect to value-added work by Seller which does not meet applicable Buyers specifications. Sellers liability is limited at Sellers election, to (1) refund of Buyers purchase price for such Products (without interest), (2) Repair of such products, or (3) replacement of such Products, provided, however, that such Products must be returned to Seller, along with acceptable evidence of purchase, within thirty (30) days from date of delivery, transportation charges prepaid. Seller shall transfer to Buyer whatever transferable warranties and indemnities Seller receives from the manufacturer of the Products, including any transferable warranties and indemnities respecting patent infringement .

LIMITATIONS OF LIABILITIES BUYER SHALL NOT IN ANY EVENT BE ENTITLED TO, AND SELLER SHALL NOT BE LIABLE FOR INDIRECT, SPECIAL, INCIDENTAL OR CONSEQUENTIAL DAMAGES OF ANY NATURE INCLUDING, WITHOUT LIMITATION, BUSINESS INTERRUPTION COSTS, REMOVAL AND/OR REINSTALLATION COSTS, REPROCUREMENT COSTS, LOSS OF PROFIT OR REVENUE, LOSS OF DATA, PROMOTIONAL OR MANUFACTURING EXPENSES, OVERHEAD, INJURY TO REPUTATION OR LOSS OF CUSTOMERS, EVEN IF SELLER HAS BEEN ADVISED OF THE POSSIBILITY OF SUCH DAMAGES. BUYERS RECOVERY FROM SELLER FOR ANY CLAIM SHALL NOT EXCEED BUYERS PURCHASE PRICE FOR THE PRODUCT GIVING RISE TO SUCH CLAIM IRRESPECTIVE OF THE NATURE OF THE CLAIM, WHETHER IN CONTRACT, TORT, WARRANTY, OR OTHERWISE. SELLER SHALL NOT BE LIABLE FOR AND BUYER SHALL INDEMNIFY, DEFEND AND HOLD SELLER HARMLESS FROM ANY CLAIMS BASED ON SELLERS COMPLIANCE WITH BUYERS DESIGNS, SPECIFICATIONS OR INSTRUCTIONS, OR MODIFICATION OF ANY PRODUCTS BY PARTIES OTHER THAN SELLER, OR USE IN COMBINATION WITH OTHER PRODUCTS